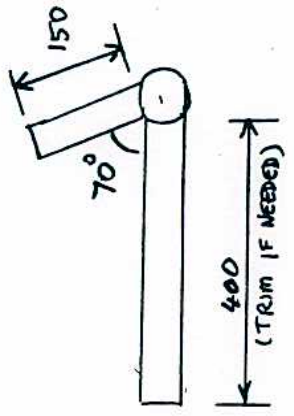
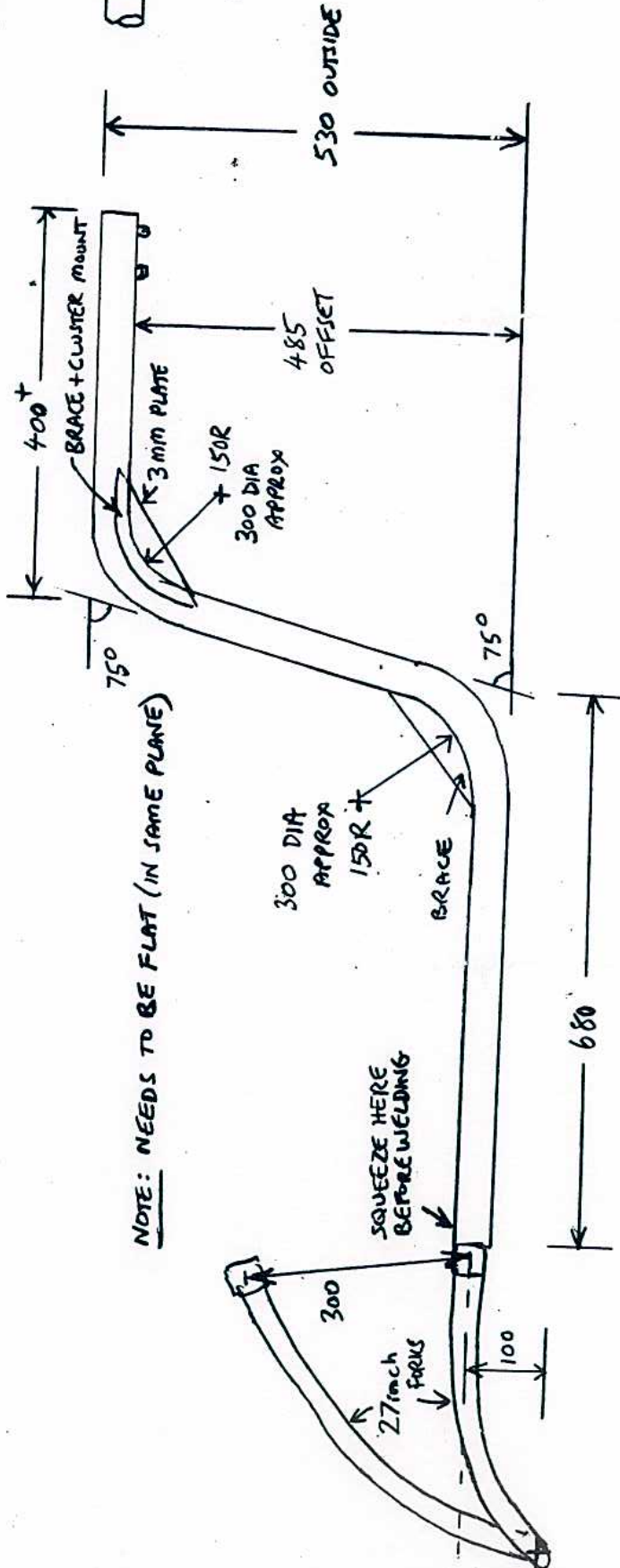
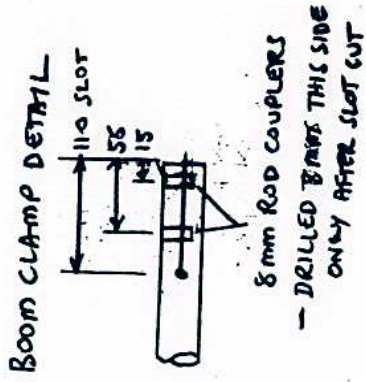


LOW RACER FRAME

- 1.6 m length $1\frac{3}{4}$ IN (44.5mm) x 1.6 EXHAUST PIPE BENT LIKE BELOW
- 0.4 m length $1\frac{5}{8}$ IN (41.3mm) x 1.6 EXHAUST PIPE (SNUG FIT IN THE ABOVE)



NOTE: NEEDS TO BE FLAT (IN SAME PLANE)